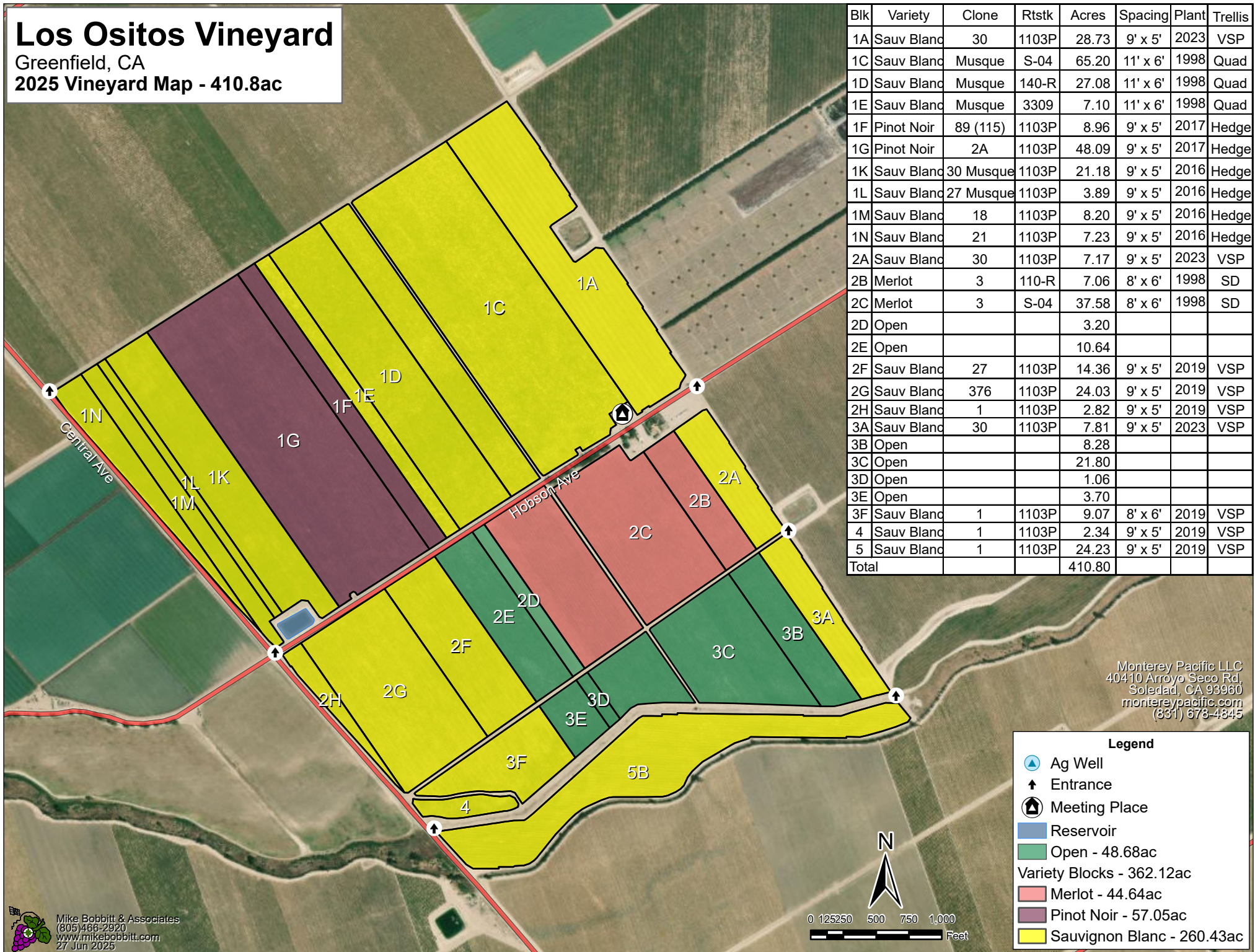


# Los Ositos Vineyard

Greenfield, CA

2025 Vineyard Map - 410.8ac



| Blk   | Variety    | Clone     | Rtstk | Acres  | Spacing  | Plant | Trellis |
|-------|------------|-----------|-------|--------|----------|-------|---------|
| 1A    | Sauv Blanc | 30        | 1103P | 28.73  | 9' x 5'  | 2023  | VSP     |
| 1C    | Sauv Blanc | Musque    | S-04  | 65.20  | 11' x 6' | 1998  | Quad    |
| 1D    | Sauv Blanc | Musque    | 140-R | 27.08  | 11' x 6' | 1998  | Quad    |
| 1E    | Sauv Blanc | Musque    | 3309  | 7.10   | 11' x 6' | 1998  | Quad    |
| 1F    | Pinot Noir | 89 (115)  | 1103P | 8.96   | 9' x 5'  | 2017  | Hedge   |
| 1G    | Pinot Noir | 2A        | 1103P | 48.09  | 9' x 5'  | 2017  | Hedge   |
| 1K    | Sauv Blanc | 30 Musque | 1103P | 21.18  | 9' x 5'  | 2016  | Hedge   |
| 1L    | Sauv Blanc | 27 Musque | 1103P | 3.89   | 9' x 5'  | 2016  | Hedge   |
| 1M    | Sauv Blanc | 18        | 1103P | 8.20   | 9' x 5'  | 2016  | Hedge   |
| 1N    | Sauv Blanc | 21        | 1103P | 7.23   | 9' x 5'  | 2016  | Hedge   |
| 2A    | Sauv Blanc | 30        | 1103P | 7.17   | 9' x 5'  | 2023  | VSP     |
| 2B    | Merlot     | 3         | 110-R | 7.06   | 8' x 6'  | 1998  | SD      |
| 2C    | Merlot     | 3         | S-04  | 37.58  | 8' x 6'  | 1998  | SD      |
| 2D    | Open       |           |       | 3.20   |          |       |         |
| 2E    | Open       |           |       | 10.64  |          |       |         |
| 2F    | Sauv Blanc | 27        | 1103P | 14.36  | 9' x 5'  | 2019  | VSP     |
| 2G    | Sauv Blanc | 376       | 1103P | 24.03  | 9' x 5'  | 2019  | VSP     |
| 2H    | Sauv Blanc | 1         | 1103P | 2.82   | 9' x 5'  | 2019  | VSP     |
| 3A    | Sauv Blanc | 30        | 1103P | 7.81   | 9' x 5'  | 2023  | VSP     |
| 3B    | Open       |           |       | 8.28   |          |       |         |
| 3C    | Open       |           |       | 21.80  |          |       |         |
| 3D    | Open       |           |       | 1.06   |          |       |         |
| 3E    | Open       |           |       | 3.70   |          |       |         |
| 3F    | Sauv Blanc | 1         | 1103P | 9.07   | 8' x 6'  | 2019  | VSP     |
| 4     | Sauv Blanc | 1         | 1103P | 2.34   | 9' x 5'  | 2019  | VSP     |
| 5     | Sauv Blanc | 1         | 1103P | 24.23  | 9' x 5'  | 2019  | VSP     |
| Total |            |           |       | 410.80 |          |       |         |